

TERMALIFT

LIFTING YOU TO NEW HEIGHTS



CORPORATE CATALOG

SALES | SERVICE | SPARE PARTS | RENT | RACKING

www.termalift.com.mk



EXCLUSIVE DISTRIBUTORS FOR

TOYOTA

MATERIAL HANDLING

Genie®



CONTENT

PAGE

1 /	CORPORATE HISTORY.....	5
2 /	BRANDS.....	6
3 /	SERVICES	7
4 /	NEW TOYOTA FORKLIFTS	8
5 /	LPG.....	12
6 /	PETROL	14
7 /	DIESEL	18
8 /	ELECTRIC	22
9 /	WAREHOUSE FORKLIFTS	24
10 /	HAND PALLET TRUCKS	26
11 /	MOVING PLATFORMS	28
12 /	CLEANING MACHINES	30
13 /	EQUIPMENT	32
14 /	ACCESSORIES	34
15 /	SPARE PARTS	35
16 /	SERVICE	36
17 /	RENTAL	37
18 /	RACKING SOLUTIONS	38
19 /	WAREHOUSE PROTECTION	40
20 /	MANAGEMENT TEAM	42
21 /	LOCATION.....	43

05

07

09

ABOUT TERMALIFT

Termalift is a company whose main activity is sales and maintenance of material handling machines, elevators and cargo platforms. This includes testing, repairing, servicing and selling of forklifts, moving platforms, elevators and cargo platforms in Macedonia and neighbouring regions.

1966

Service Vinkler

Our roots in the technique date 50 years ago when Ljubinko and Verica Damjanovski opened a small service for electrical appliances under the name Vinkler.



1990

Company Terma

Vinkler grew into a company under the name of Terma, which expanded its activity with selling and installing passenger and freight elevators.



2014

Exclusive, independent distributor of TOYOTA

Termalift becomes Exclusive Independent Distributor of TOYOTA Forklifts for Macedonia, Albania and Kosovo.

TOYOTA

MATERIAL HANDLING

2016

Macedonian Quality

Termalift gains recognition for Macedonian quality for business and commitment to improving the country's economy.

MACEDONIAN
QUALITY
2016



CORPORATE HISTORY

1996

Establishment of Termalift

In 1996, Terma company was renamed into Termalift DD, with founder Dragan Damjanovski.



1998

Starting with forklifts import

Termalift DD started importing forklifts from Japan, and begins it's unique refurbishing process, bringing them into new light and capabilities.



2017

ASEC Certificate

In 2017, Termalift acquires ASEC - After Sales Evaluation Certification, for service and parts operations according to TOYOTA global standards.



2020

Macedonian Quality

Termalift again gains recognition for Macedonian quality for continuous action during a world pandemic.

MACEDONIAN
QUALITY
2020



TERMALIFT TODAY ²⁵years TERMALIFT

And 25 years later, Termalift has sold over 4000 different types of machines in Macedonia and neighboring countries. With over 9,000 satisfied customers in all areas of sales, service, spare parts, accessories, equipment, rent, racking solutions, warehouse protection and other services...

BRANDS

As general distributors of the world's top brands in material handling TOYOTA and GENIE, we offer you the opportunity to make the best choice according to your needs. Apart from having various types of forklifts and mobile platforms from different brands, we also offer original spare parts, accessories and various Equipment for them.

Brands we sell and maintain:

New machines:

TOYOTA

MATERIAL HANDLING

Genie®

Refurbished machines:

 **MITSUBISHI**
FORKLIFT TRUCKS

NISSAN
FORKLIFT

 **Sumitomo**
Yale

KOMATSU

TCM

NICHYU



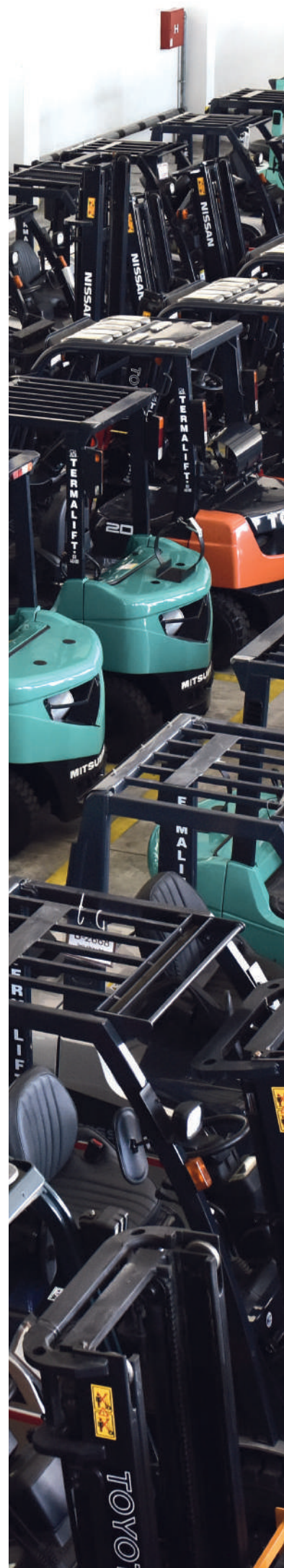
Linde

SKYJACK

MANITOU

JLG

TERMALIFT



SERVICES



SALES

With 25 years of experience in complete material handling solutions, Termalift facilitates and simplifies your hard work. Narrow spaces, large heights, handling goods are just some of the problems we deal to help our customers. With a detailed analysis of your processes, facilities and working conditions, we will offer you the most suitable solution that will reduce your costs, time, and risks when handling cargo.



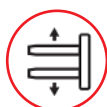
AFTERSALE SERVICE

Thanks to the long experience in delivering over 4000 new and refurbished forklifts and as officially authorized servicers according to TOYOTA standards, we are providing you with a professional service composed of highly professional personnel and specialized vehicles. If you are looking for regular maintenance, small repair, engine rebuild, periodic maintenance, or other service packages, we are always available to answer you.



SPARE PARTS

We have a warehouse with over 60,000 original spare parts in stock, for all types of machines from different manufacturers with direct shipment to your location.



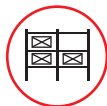
EQUIPMENT

If you need non-standard manipulation of goods, Termalift offers accessories for forklifts that are modified specifically to meet your needs. Fork positioners, paper clamps, bale clamps, fork rotators and many others.



RENTAL

We have a large selection of various load handling machines such as heavy machine carriers, warehouse forklifts, counterweight forklifts and moving platforms. They are always ready to rent: Daily, Weekly, Monthly, Annually short-term and Annually long-term.



WAREHOUSE RACKING & PROTECTION

We now offer a wide range of warehouse racking and protection solutions to help you increase your warehouse efficiency and safety. With our racking solutions we can provide you with the best storage places to space ratio, and our protection products will keep your warehouse and workers safe.

TOYOTA

MATERIAL HANDLING

stronger together



NEW FORKLIFTS

From TOYOTA factories
across Europe and the world

TOYOTA is the world's best-selling forklift truck. Why? A special standardized production system TPC (Toyota Production System) that guarantees high quality and reliability of the machines. Most widespread and specialized maintenance service for forklifts (ASEC). Fast access and quality parts (Genuine parts). An annual turnover of \$9,5 billion and over 60,000 technicians in Europe only confirm its quality.

**TOYOTA**

Model: **BT Lifter**
 Loading capacity: **up to 3000 kg**
 Lifting height: **200 mm**
 Engine: **Manual**

**TOYOTA**

Model: **BT Levio**
 Loading capacity: **up to 2500 kg**
 Lifting height: **200 mm**
 Engine: **Electric**
 Battery: **PzS or Li-ion**

**TOYOTA**

Model: **BT Optio**
 Loading capacity: **up to 2500 kg**
 Lifting height: **up to 2800 mm**
 Engine: **Electric**
 Battery: **PzS or Li-ion**

**TOYOTA**

Model: **BT Tracto**
 Капацитет на влечение: **up to 49 t**
 Max speed: **30 km/h**
 Engine: **Electric**
 Battery: **PzS or Li-ion**

**TOYOTA**

Model: **BT Staxio**
 Loading capacity: **up to 2000 kg**
 Lifting height: **up to 5400 mm**
 Engine: **Electric**
 Battery: **PzS or Li-ion**

**TOYOTA**

Model: **BT Reflex**
 Loading capacity: **up to 2500 kg**
 Lifting height: **up to 13000 mm**
 Engine: **Electric**
 Battery: **PzS or Li-ion**

**TOYOTA****VNA**

Model: **BT Vector**
 Loading capacity: **1000 - 1500 kg**
 Lifting height: **up to 15100 mm**
 Engine: **Electric**
 Battery: **PzS or Li-ion**

**TOYOTA**

Model: **Traigo 24/48**
 Loading capacity: **1500 - 2000 kg**
 Lifting height: **6500 - 7500 mm**
 Engine: **Electric**
 Battery: **PzS or Li-ion**

**TOYOTA**

Model: **Traigo 80**
 Loading capacity: **2000 - 8000 kg**
 Lifting height: **up to 7000 mm**
 Engine: **Electric**
 Battery: **PzS**

**TOYOTA**

Model: **Tonero**
 Loading capacity: **up to 3500 kg**
 Lifting height: **up to 7000 mm**
 Engine: **LPG or Diesel**
 Transmission: **Automatic**

**TOYOTA**

Model: **Tonero**
 Loading capacity: **up to 3500 kg**
 Lifting height: **up to 7000 mm**
 Engine: **LPG or Diesel**
 Transmission: **Hydrostatic**

**TOYOTA**

Model: **Tonero**
 Loading capacity: **up to 8000 kg**
 Lifting height: **up to 6000 mm**
 Engine: **LPG or Diesel**
 Transmission: **Automatic**

* PzS - Lead-Acid battery



LPG

Counterweight internal combustion forklifts

This are the forklifts suitable for all kinds of places and conditions, then LPG forklifts are your choice. The features and performance are superior to equivalents of an electric or diesel engine. Travel speed, speed of acceleration and lifting speeds usually exceed their electric and diesel counterparts due to a better ratio between power and weight.

Preferred choice for small forklifts up to 3 tons.


MITSUBISHI

Model: **FG14T**
Max lifting weight: **1400 kg**
Max lifting height: **3000 mm**
Engine: **LPG/Petrol**
Transmission: **Automatic**


TOYOTA

Model: **02-8FGL15**
Max lifting weight: **1500 kg**
Max lifting height: **3000 mm**
Engine: **LPG/Petrol**
Equipment: **Side Shift**


NISSAN

Model: **L01A15W**
Max lifting weight: **1500 kg**
Max lifting height: **3000 mm**
Engine: **LPG/Petrol**
Equipment: **Fork positioner**


NISSAN

Model: **L01A15D**
Max lifting weight: **1500 kg**
Max lifting height: **3000 mm**
Engine: **LPG**
Transmission: **Automatic**


LINDE

Model: **H14-01**
Max lifting weight: **1400 kg**
Max lifting height: **3150 mm**
Engine: **LPG**
Equipment: **Side Shift**


NISSAN

Model: **P1F1A15D**
Max lifting weight: **1500 kg**
Max lifting height: **3000 mm**
Engine: **LPG/Petrol**
Transmission: **Automatic**


NISSAN

Model: **NP1F1A15D**
Max lifting weight: **1500 kg**
Max lifting height: **3000 mm**
Engine: **LPG/Petrol**
Transmission: **Automatic**


NISSAN

Model: **P1F1A15D**
Max lifting weight: **1500 kg**
Max lifting height: **3000 mm**
Engine: **LPG/Petrol**
Transmission: **Automatic**


NISSAN

Model: **FGE15T15**
Max lifting weight: **1500 kg**
Max lifting height: **3000 mm**
Engine: **LPG/Petrol**
Transmission: **Automatic**


MITSUBISHI

Model: **FG18D**
Max lifting weight: **1800 kg**
Max lifting height: **3000 mm**
Engine: **LPG**
Equipment: **Side Shift**


TOYOTA

Model: **02-8FG15**
Max lifting weight: **1500 kg**
Max lifting height: **3000 mm**
Engine: **LPG**
Equipment: **Side Shift**


MITSUBISHI

Model: **FG20T-F17D**
Max lifting weight: **2000 kg**
Max lifting height: **3000 mm**
Engine: **LPG**
Transmission: **Automatic**

**TOYOTA**

Model: 8FG20
 Max lifting weight: 2000 kg
 Max lifting height: 3000 mm
 Engine: LPG/Petrol
 Transmission: Manual

**TOYOTA**

Model: 02-8FGL20
 Max lifting weight: 2000 kg
 Max lifting height: 3000 mm
 Engine: LPG
 Transmission: Automatic

**TOYOTA**

Model: 02-8FLG20
 Max lifting weight: 2000 kg
 Max lifting height: 3000 mm
 Engine: LPG
 Transmission: Automatic

**NISSAN**

Model: PL02A20W
 Max lifting weight: 2000 kg
 Max lifting height: 3000 mm
 Engine: LPG/Petrol
 Transmission: Automatic

**SUMITOMO YALE**

Model: 03FL20PAXI2LD
 Max lifting weight: 2000 kg
 Max lifting height: 4000 mm
 Engine: LPG
 Transmission: Automatic

**NISSAN**

Model: 19ZP1F2M20D
 Max lifting weight: 2000 kg
 Max lifting height: 3000 mm
 Engine: LPG/Petrol
 Transmission: Manual

**NISSAN**

Model: PL02A20W
 Max lifting weight: 2000 kg
 Max lifting height: 3000 mm
 Engine: LPG
 Transmission: Automatic

**LINDE**

Model: H20T-02/600
 Max lifting weight: 2000 kg
 Max lifting height: 4050 mm
 Engine: LPG
 Transmission: Hydrostatic

**NISSAN**

Model: P1F2A20D
 Max lifting weight: 2000 kg
 Max lifting height: 3000 mm
 Engine: LPG
 Transmission: Automatic

**TOYOTA**

Model: 8FGL25
 Max lifting weight: 2500 kg
 Max lifting height: 3000 mm
 Engine: LPG/Petrol
 Transmission: Manual

**NISSAN**

Model: P1F2A20D
 Max lifting weight: 2000 kg
 Max lifting height: 3000 mm
 Engine: LPG/Petrol
 Transmission: Automatic

**MITSUBISHI**

Model: FG25T
 Max lifting weight: 2500 kg
 Max lifting height: 3000 mm
 Engine: LPG/Petrol
 Equipment: Side Shift

**NISSAN**

Model: NP1F2A25D
 Max lifting weight: 2500 kg
 Max lifting height: 3000 mm
 Engine: LPG/Petrol
 Equipment: Side Shift

**SUMITOMO YALE**

Model: 11FL25PAXII21D
 Max lifting weight: 2500 kg
 Max lifting height: 3000 mm
 Engine: LPG
 Equipment: Fork positioner

**NISSAN**

Model: PL02A25W
 Max lifting weight: 2500 kg
 Max lifting height: 3000 mm
 Engine: LPG
 Transmission: Automatic

**SUMITOMO YALE**

Model: 11FL25PAXIII25D
 Max lifting weight: 2500 kg
 Max lifting height: 4000 mm
 Engine: LPG
 Equipment: Side Shift

**LINDE**

Model: H25T
 Max lifting weight: 2500 kg
 Max lifting height: 3150 mm
 Engine: LPG
 Equipment: Fork positioner

**SUMITOMO YALE**

Model: 13FL35PAXI2LD
 Max lifting weight: 3500 kg
 Max lifting height: 3000 mm
 Engine: LPG
 Transmission: Side Shift

**LINDE**

Model: H25T
 Max lifting weight: 2500 kg
 Max lifting height: 3200 mm
 Engine: LPG
 Equipment: Side Shift

**SUMITOMO YALE**

Model: 13FL35PAXI2LD
 Max lifting weight: 3500 kg
 Max lifting height: 3500 mm
 Engine: LPG
 Transmission: Automatic

**NISSAN**

Model: 52ZUG1F2A30D
 Max lifting weight: 3000 kg
 Max lifting height: 3000 mm
 Engine: LPG
 Transmission: Automatic

**NISSAN**

Model: UG1F2A35D
 Max lifting weight: 3500 kg
 Max lifting height: 3000 mm
 Engine: LPG/Petrol
 Equipment: Side Shift

**TOYOTA**

Model: 8FG35
 Max lifting weight: 4000 kg
 Max lifting height: 5500 mm
 Engine: LPG/Petrol
 Equipment: Side Shift

**MITSUBISHI**

Model: FG35
 Max lifting weight: 4000 kg
 Max lifting height: 3300 mm
 Engine: LPG
 Transmission: Automatic



PETROL

Counterweight internal combustion forklifts

As a cheaper starting version of a forklift for work in all conditions, petrol trucks are your best choice, with additional option of installing a LPG system. They provide greater torque and horsepower to meet your diverse handling needs. Ideal for warehouses, recycling industries or other indoor or outdoor environments.

Preferred choice for small forklifts up to 5 tons.

**MITSUBISHI**

Model: **FGE10T**
 Max lifting weight: **1000 kg**
 Max lifting height: **3000 mm**
 Engine: **Petrol**
 Transmission: **Automatic**

**MITSUBISHI**

Model: **FG14T**
 Max lifting weight: **1400 kg**
 Max lifting height: **3000 mm**
 Engine: **Petrol**
 Transmission: **Automatic**

**TOYOTA**

Model: **8FG15**
 Max lifting weight: **1500 kg**
 Max lifting height: **3000 mm**
 Engine: **Petrol**
 Transmission: **Manual**

**MITSUBISHI**

Model: **FGE15T**
 Max lifting weight: **1500 kg**
 Max lifting height: **3000 mm**
 Engine: **Petrol**
 Tyres: **White Non-marking**

**MITSUBISHI**

Model: **KFG15D**
 Max lifting weight: **1500 kg**
 Max lifting height: **4000 mm**
 Engine: **Petrol**
 Transmission: **Manual**

**MITSUBISHI**

Model: **02-8FG15**
 Max lifting weight: **1500 kg**
 Max lifting height: **3200 mm**
 Engine: **Petrol**
 Transmission: **Automatic**

**NISSAN**

Model: **NP1F1A15J**
 Max lifting weight: **1500 kg**
 Max lifting height: **3000 mm**
 Engine: **Petrol**
 Transmission: **Automatic**

**MITSUBISHI**

Model: **FGE15T**
 Max lifting weight: **1500 kg**
 Max lifting height: **3000 mm**
 Engine: **Petrol**
 Transmission: **Automatic**

**NISSAN**

Model: **NL01A15**
 Max lifting weight: **1500 kg**
 Max lifting height: **3000 mm**
 Engine: **Petrol**
 Transmission: **Automatic**

**TOYOTA**

Model: **8FG15**
 Max lifting weight: **1500 kg**
 Max lifting height: **3000 mm**
 Engine: **Petrol**
 Transmission: **Manual**

**NISSAN-UNICARRIERS**

Model: **NP1F1M15J**
 Max lifting weight: **1500 kg**
 Max lifting height: **3000 mm**
 Engine: **Petrol**
 Transmission: **Manual**

**MITSUBISHI**

Model: **FGE18T**
 Max lifting weight: **1800 kg**
 Max lifting height: **3000 mm**
 Engine: **Petrol**
 Transmission: **Автоматски**

**TOYOTA**

Model: 02-7FG20
 Max lifting weight: 2000 kg
 Max lifting height: 4500 mm
 Engine: Petrol
 Transmission: Manual

**NISSAN**

Model: PJ02A20
 Max lifting weight: 2000 kg
 Max lifting height: 3000 mm
 Engine: Petrol
 Equipment: Side Shift

**TOYOTA**

Model: 8FG20
 Max lifting weight: 2000 kg
 Max lifting height: 3000 mm
 Engine: Petrol
 Transmission: Manual

**NISSAN**

Model: P1F2M20J
 Max lifting weight: 2000 kg
 Max lifting height: 4000 mm
 Engine: Petrol
 Transmission: Manual

**MITSUBISHI**

Model: FG20D-F17D
 Max lifting weight: 2000 kg
 Max lifting height: 3000 mm
 Engine: Petrol
 Transmission: Manual

**TOYOTA**

Model: 8FG25
 Max lifting weight: 2500 kg
 Max lifting height: 3500 mm
 Engine: Petrol
 Transmission: Manual

**MITSUBISHI**

Model: FGE25T-F17D
 Max lifting weight: 2500 kg
 Max lifting height: 3000 mm
 Engine: Petrol
 Transmission: Automatic

**NISSAN**

Model: LPL02A25J
 Max lifting weight: 2500 kg
 Max lifting height: 3000 mm
 Engine: Petrol
 Transmission: Automatic

**MITSUBISHI**

Model: P1F2A25J
 Max lifting weight: 2500 kg
 Max lifting height: 3000 mm
 Engine: Petrol
 Equipment: Fork positioners

**MITSUBISHI**

Model: **KFGE25D-F17D**
 Max lifting weight: **2500 kg**
 Max lifting height: **3000 mm**
 Engine: **Petrol**
 Transmission: **Automatic**

**SUMITOMO-YALE**

Model: **11FG25PAXII21D**
 Max lifting weight: **2500 kg**
 Max lifting height: **4050 mm**
 Engine: **Petrol**
 Transmission: **Automatic**

**SUMITOMO-YALE**

Model: **13FG30PAXIII25D**
 Max lifting weight: **3000 kg**
 Max lifting height: **3000 mm**
 Engine: **Petrol**
 Transmission: **Automatic**

**TOYOTA**

Model: **02-5FG35**
 Max lifting weight: **3500 kg**
 Max lifting height: **4500 mm**
 Engine: **Petrol**
 Equipment: **Side Shift**

**NISSAN**

Model: **UG1F2A30**
 Max lifting weight: **3000 kg**
 Max lifting height: **3000 mm**
 Engine: **Petrol**
 Transmission: **Automatic**

**SUMITOMO**

Model: **13FG30PAXIII25D**
 Max lifting weight: **3000 kg**
 Max lifting height: **3000 mm**
 Engine: **Petrol**
 Transmission: **Automatic**



DIESEL

Counterweight internal combustion forklifts

Need a larger forklift for working in extreme outdoor and harsh conditions? Then diesel forklifts are your choice. These are durable forklifts that offer a powerful combination of high efficiency and low emission of exhaust gases.

Preferred choice for large forklifts above 2 tons.

**TOYOTA**

Model: 02-8FDL20
 Max lifting weight: 2000 kg
 Max lifting height: 3000 mm
 Engine: Diesel
 Transmission: Automatic

**NISSAN**

Model: FL01A15
 Max lifting weight: 1500 kg
 Max lifting height: 3000 mm
 Engine: Diesel
 Transmission: Automatic

**TOYOTA**

Model: 02-8FDL20
 Max lifting weight: 2000 kg
 Max lifting height: 3000 mm
 Engine: Diesel
 Transmission: Automatic

**MITSUBISHI**

Model: FDE20T
 Max lifting weight: 2000 kg
 Max lifting height: 3000 mm
 Engine: Diesel
 Equipment: Full free lift

**NISSAN**

Model: YJ02A20
 Max lifting weight: 2000 kg
 Max lifting height: 3000 mm
 Engine: Diesel
 Transmission: Automatic

**MITSUBISHI**

Model: FDE20T
 Max lifting weight: 2000 kg
 Max lifting height: 3000 mm
 Engine: Diesel
 Transmission: Automatic

**TOYOTA**

Model: 02-8FD20
 Max lifting weight: 2000 kg
 Max lifting height: 3000 mm
 Engine: Diesel
 Transmission: Automatic

**NISSAN**

Model: Y1F2A20
 Max lifting weight: 2000 kg
 Max lifting height: 3000 mm
 Engine: Diesel
 Transmission: Automatic

**TOYOTA**

Model: 02-8FD20
 Max lifting weight: 2000 kg
 Max lifting height: 3000 mm
 Engine: Diesel
 Equipment: Side Shift

**TOYOTA**

Model: 02-8FDF25
 Max lifting weight: 2500 kg
 Max lifting height: 3000 mm
 Engine: Diesel
 Equipment: Side Shift

**TOYOTA**

Model: 62-8FDF30
 Max lifting weight: 3000 kg
 Max lifting height: 3000 mm
 Engine: Diesel
 Transmission: Automatic

**TOYOTA**

Model: 02-8FDJF35
 Max lifting weight: 3500 kg
 Max lifting height: 4000 mm
 Engine: Diesel
 Equipment: Side Shift, Cabin

**NISSAN**

Model: 02ZYL02A25
 Max lifting weight: 2500 kg
 Max lifting height: 3000 mm
 Engine: Diesel
 Transmission: Automatic

**NISSAN**

Model: YL02M25
 Max lifting weight: 2500 kg
 Max lifting height: 3000 mm
 Engine: Diesel
 Transmission: Manual

**MITSUBISHI**

Model: FDE20T
 Max lifting weight: 2000 kg
 Max lifting height: 3000 mm
 Engine: Diesel
 Equipment: Full free lift

**MITSUBISHI**

Model: FDE20T
 Max lifting weight: 2000 kg
 Max lifting height: 4000 mm
 Engine: Diesel
 Equipment: Side Shift

**YALE**

Model: 11-FD20PVIIXA
 Max lifting weight: 2000 kg
 Max lifting height: 3000 mm
 Engine: Diesel
 Transmission: Automatic

**MITSUBISHI**

Model: FDE20T
 Max lifting weight: 2000 kg
 Max lifting height: 3000 mm
 Engine: Diesel
 Equipment: Side Shift

**TOYOTA**

Model: 02-8FDF30
 Max lifting weight: 3000 kg
 Max lifting height: 3700 mm
 Engine: Diesel
 Equipment: Fork shifter

**MITSUBISHI**

Model: FDE30T
 Max lifting weight: 3000 kg
 Max lifting height: 4000 mm
 Engine: Diesel
 Transmission: Automatic

**TOYOTA**

Model: 8FD35
 Max lifting weight: 3500 kg
 Max lifting height: 4000 mm
 Engine: Diesel
 Equipment: Side Shift

**NISSAN**

Model: D1F4A45
 Max lifting weight: 4500 kg
 Max lifting height: 4500 mm
 Engine: Diesel
 Equipment: Double tyres, Side Shift

**SUMITOMO**

Model: 21-FD35PAXI
 Max lifting weight: 3500 kg
 Max lifting height: 3000 mm
 Engine: Diesel
 Transmission: Automatic

**MITSUBISHI**

Model: FD40NT
 Max lifting weight: 4000 kg
 Max lifting height: 3000 mm
 Engine: Diesel
 Transmission: Automatic



ELECTRIC

Counterbalanced forklifts

Electric counterbalanced forklifts are economical, easy to handle, rigid and extremely durable machines. The forklifts are quiet and clean, making them more suitable for indoor use with "0" emission of exhaust gases, and with quick switching of batteries, the downtime is reduced to a minimum. Preferred choice for small forklifts. There are two options for choosing, 3 wheels forklift for operation in tight spaces and with 4 wheels for handling bigger goods.

**TOYOTA**

Model: 8FBEL10
 Max lifting weight: 1000 kg
 Max lifting height: 3000 mm
 Battery: 48V
 Charger: Integrated

**NISSAN**

Model: NK1B1L10
 Max lifting weight: 1000 kg
 Max lifting height: 3000 mm
 Engine: 48V
 Charger: Integrated

**TOYOTA**

Model: 7FBE13
 Max lifting weight: 1300 kg
 Max lifting height: 3000 mm
 Battery: 48V
 Charger: Integrated

**TOYOTA**

Model: 7FBE13
 Max lifting weight: 1300 kg
 Max lifting height: 3000 mm
 Engine: 48V
 Charger: Integrated

**TCM**

Model: FB15-7
 Max lifting weight: 1500 kg
 Max lifting height: 3000 mm
 Battery: 48V
 Equipment: Side Shift

**TOYOTA**

Model: 7FBEST13
 Max lifting weight: 1250 kg
 Max lifting height: 4300 mm
 Battery: 24V
 Charger: Standard

**LINDE**

Model: E16P-01
 Max lifting weight: 1600 kg
 Max lifting height: 4900 mm
 Battery: 48V
 Charger: Standard

**NICHYU**

Model: FBT15PN
 Max lifting weight: 1500 kg
 Max lifting height: 3500 mm
 Battery: 48V
 Charger: Standard

**TOYOTA**

Model: 7FBL15
 Max lifting weight: 1500 kg
 Max lifting height: 3000 mm
 Battery: 48V
 Charger: Integrated

**NICHYU**

Model: FB15PN
 Max lifting weight: 1500 kg
 Max lifting height: 3000 mm
 Battery: 48V
 Charger: Standard

**TOYOTA**

Model: 7FB15JK
 Max lifting weight: 1500 kg
 Max lifting height: 4000 mm
 Battery: 48V
 Charger: Integrated

**TOYOTA**

Model: 8FBE20
 Max lifting weight: 2000 kg
 Max lifting height: 6000 mm
 Battery: 48V
 Charger: Integrated



WAREHOUSE

Electric powered warehouse forklifts

Warehouse forklifts are economical, compatible and adaptable machines for every kind of warehouse operation and storage. The forklifts are quiet and clean, making them more suitable for indoor use, and with quick and easy switching of batteries, the downtime is reduced to a minimum. Preferred choice for small and large warehouses, tight surfaces and high shelves. Loading and unloading trucks on a ramp and palletizing through long warehouse premises.

**BT - TOYOTA**

Model: LPE200/6
 Max lifting weight: 2000 kg
 Max lifting height: 200 mm
 Battery: 24V 260Ah

**BT - TOYOTA**

Model: LPE200
 Max lifting weight: 2000 kg
 Max lifting height: 200 mm
 Battery: 24V 400Ah
 Equipment: Standing platform

**BT - TOYOTA**

Model: LPE250
 Max lifting weight: 2500 kg
 Max lifting height: 200 mm
 Battery: 24V 500Ah
 Equipment: Standing platform

**BT - TOYOTA**

Model: LPE250
 Max lifting weight: 2500 kg
 Max lifting height: 200 mm
 Battery: 24V 500Ah
 Equipment: Standing platform

**BT - TOYOTA**

Model: LPE250
 Max lifting weight: 2500 kg
 Max lifting height: 200 mm
 Battery: 24V 500Ah
 Equipment: Standing platform

**BT - TOYOTA**

Model: LPE250
 Max lifting weight: 2500 kg
 Max lifting height: 200 mm
 Battery: 24V 500Ah
 Equipment: Standing platform

**BT - TOYOTA**

Model: SWE120
 Max lifting weight: 1200 kg
 Max lifting height: 2700 mm
 Battery: 24V 255Ah
 Equipment: Standing platform

**LINDE**

Model: L14AP
 Max lifting weight: 1400 kg
 Max lifting height: 3010 mm
 Battery: 24V 375Ah
 Equipment: Standing platform

**BT - TOYOTA**

Model: SWE120
 Max lifting weight: 1250 kg
 Max lifting height: 4150 mm
 Battery: 24V 105Ah Li-ion
 Equipment: Standing platform

**BT - TOYOTA**

Model: RRE1160
 Max lifting weight: 1600 kg
 Max lifting height: 6750 mm
 Battery: 48V 620Ah

**BT - TOYOTA**

Model: RRE160
 Max lifting weight: 1600 kg
 Max lifting height: 9000 mm
 Battery: 48V 620Ah

**BT - TOYOTA**

Model: RRE160E
 Max lifting weight: 1600 kg
 Max lifting height: 7150 mm
 Battery: 48V 620Ah
 Equipment: Накосувачка кабина



HAND PALLET TRUCKS

Simple and agile pallet forklifts

The simplest pallet forklift. Excellent warehouse machines for moving goods on short links, for assistance in storage, truck loading and unloading and similar work tasks. You can choose a wide range of different models: hand pallet truck with scales or weight indicator, lifting heights up to 3 meters, inox, chromed, with long forks, li-ion powered and specially designed trucks for different needs.

**TOYOTA LHM 230**

Max lifting weight: 2300 kg
 Max lifting height: 200 mm
 Warranty: 5 years

**TE2500**

Max lifting weight: 2500 kg
 Max lifting height: 200 mm
 Warranty: 1 year

**TE3500**

Max lifting weight: 3500 kg
 Max lifting height: 200 mm
 Warranty: 1 year

**TE20L - LOW PROFILE**

Max lifting weight: 2000 kg
 Max lifting height: 140 mm
 Forks height: 50 mm
 Warranty: 1 year

**INOX**

Max lifting weight: 2500 kg
 Max lifting height: 200 mm
 Warranty: 1 year

**TE20ES - SCALES**

Max lifting weight: 2500 kg
 Max lifting height: 200 mm
 Warranty: 1 year

**MAKA3M**

Max lifting weight: 1000 kg
 Max lifting height: 800 mm
 Warranty: 1 year

**TE1500/16**

Max lifting weight: 1500 kg
 Max lifting height: 1600 mm
 Fork length: 1150 mm
 Warranty: 1 year

**LIFTING TABLE - TE35**

Max lifting weight: 350 kg
 Max lifting height: 1300 mm
 Warranty: 6 months



**ELECTRIC
LIFTING AND
MOVING**

TE20EL ECONOMY

Max lifting weight: 2000 kg
 Max lifting height: 200 mm
 Warranty: 6 months
 Battery: Li-ion



**ELECTRIC
LIFTING AND
MOVING**

TOYOTA BT TYRO - LHE155

Max lifting weight: 1550 kg
 Max lifting height: 200 mm
 Warranty: 1 year
 Battery: Li-ion



**ELECTRIC
LIFTING AND
MOVING**

TOYOTA BT TYRO - SHE100

Max lifting weight: 1000 kg
 Max lifting height: 2900 mm
 Warranty: 1 year
 Battery: Li-ion

*All models that are not listed can be found on our online web store www.shop.termalift.com.mk



MOBILE PLATFORMS

**Ideal for work and maintenance
on high places**

With mobile platforms, your work at heights and unreachable places is as easy as 123. Whether you work in tight spaces, high places up to 27 meters tall or rough terrain, with mobile platforms for various purposes, you can easily complete any job. Most suitable for maintenance and servicing on high places and buildings. They are also easy to drive and transport which makes them ideal for carrying out specific tasks and projects right on time.

**GENIE**

Model: **GS-2032**
 Max lifting weight: **363 kg**
 Working height: **8.100 mm**
 Engine: **Electric**

**GENIE**

Model: **GS-2646**
 Max lifting weight: **454 kg**
 Working height: **10.000 mm**
 Engine: **Electric**

**SKYJACK**

Model: **SJIII-4632**
 Max lifting weight: **317 kg**
 Working height: **11.700 mm**
 Engine: **Electric**

**NEW****SCISSOR PLATFORM**

Model: **SC14**
 Max lifting weight: **320 kg**
 Working height: **14.000 mm**
 Engine: **Electric**

**SKYJACK**

Model: **SJIII-4632**
 Max lifting weight: **317 kg**
 Working height: **11.580 mm**
 Engine: **Electric**

**GENIE**

Model: **GS-2646**
 Max lifting weight: **454 kg**
 Working height: **10.000 mm**
 Engine: **Electric**

**GENIE**

Model: **Z34/22RT**
 Max lifting weight: **227 kg**
 Working height: **10.600 mm**
 Engine: **Diesel**

**MANITOU**

Model: **120AETJ**
 Max lifting weight: **200 kg**
 Working height: **12.000 mm**
 Engine: **Electric**

**GENIE**

Model: **Z45/25DJC**
 Max lifting weight: **227 kg**
 Working height: **13.700 mm**
 Engine: **Electric**



FLOOR CLEANING MACHINES

Everything you need to perfectly clean
warehouse and industrial floors

Industrial floor cleaning machines are machines that use a combination of water, detergent, brushes and vacuum cleaners to clean and dry floors in various premises, such as warehouses, factories, supermarkets, airports and more. Industrial floor cleaning machines can be classified into different categories based on their size, design and function.



ECOMINI 430

- Cleaning capacity: **1720 m²/h**
- Solution tank capacity: **17 l**
- Drive: **In a socket or with a Battery**
- Operating range / batteries: **1:30 h**



ECOSMALL 55-77

- Cleaning capacity: **1640 m²/h**
- Solution tank capacity: **30 l**
- Drive: **In a socket or with a Battery**
- Operating range / batteries: **2 - 3 h**



I 16-18-20

- Cleaning capacity: **2750-3250 m²/h**
- Solution tank capacity: **70 l**
- Drive: **Battery**
- Operating range: **3 - 3:30 h**



ECOSMART 55-65

- Cleaning capacity: **3200-4000 m²/h**
- Solution tank capacity: **110 l**
- Drive: **Battery**
- Operating range: **3:30 - 4 h**



EKOSMILE 65-75-85-100

- Cleaning capacity: **4000-5750 m²/h**
- Solution tank capacity: **150 l**
- Drive: **Battery**
- Operating range: **4 - 5 h**



UNICA 75-85-100

- Cleaning capacity: **4500-6000 m²/h**
- Solution tank capacity: **225 l**
- Drive: **Battery**
- Operating range: **3:30 - 4 h**



S 28 - S28 S

- Cleaning capacity: **5000-6600 m²/h**
- Solution tank capacity: **70 l**
- Drive: **In a socket or with a Battery**
- Operating range: **4 h**



S 32 - S 34

- Cleaning capacity: **6600-10150 m²/h**
- Solution tank capacity: **200 l - 230 l**
- Drive: **Battery / Diesel**
- Operating range: **4 h**



S 38 - S 48

- Cleaning capacity: **10500-16500 m²/h**
- Solution tank capacity: **220 l - 350 l**
- Drive: **Battery / Diesel / Плин**
- Operating range: **4 h**





EQUIPMENT

Forklift Equipment for specific working tasks

If you need a specific type of material manipulation such as rotating, spilling, pressing, two-pallet manipulation and similar needs, we can offer you a variety of Equipment designed for the needed task. Bale clamps, carton clamps, roll clamps, sponge clamps, rotators, fork positioners, fork extensions are just part of the Equipment that we can mount and deliver.



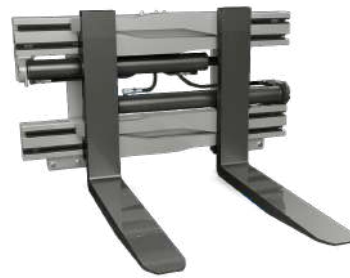
SIDE-SHIFT

Loading capacity: **up to 12000kg**



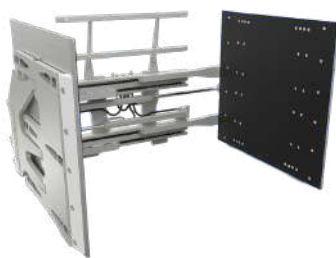
FORKS ROTATOR 360°

Loading capacity: **up to 12000kg**



FORK POSITIONER

Loading capacity: **up to 12000kg**



CARTON CLAMP

Loading capacity: **up to 3000 kg**



FORK HINGE

Loading capacity: **up to 5000 kg**



BALE CLUMP

Loading capacity: **up to 5000 kg**



ROLL CLAMP 360°

Loading capacity: **up to 6000 kg**



FOAM CLAMP

Loading capacity: **up to 1800 kg**



POSITIONER, SIDE SHIFT AND ROTATOR 90°

Loading capacity: **up to 1800 kg**



DIFFERENT TYPES OF FORKS

Loading capacity: **up to 20000 kg**



FORK EXTENSIONS

Loading capacity: **up to 8000 kg**
Length: **up to 2000 mm**



TWO-PALLET MANIPULATOR

Loading capacity: **up to 5000 kg**

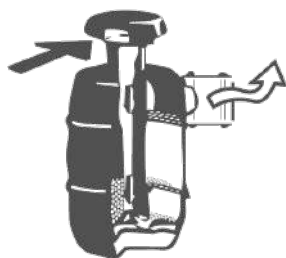
ACCESSORIES

We have various types of accessories in our stock, for all types of machines from different manufacturers.

If you have a more specific request for additional equipment, we can order it and deliver it to your location.



① LIGHT INDICATOR



② OIL FILTER



③ FIRE EXTINGUISHER



④ ROTATING BEACON



Examples of installed accessories:

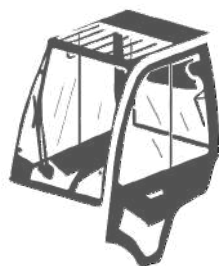
1, 4 - Indicator and rotary light for improved environmental attention when working with the machine

2 - Oil filter for cleaner air in the engine

3 - Fire extinguisher

5 - Metal cabin for driver comfort and protection against external factors

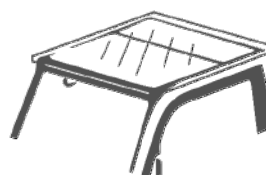
6 - Air conditioner for cooling the cabin



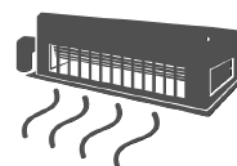
⑤ FULL METAL CABIN



PVC CABIN



PVC ROOF



⑥ AIR CONDITIONER

Each spare part of the forklift is designed to meet the strict quality standards. We have trained service technicians who are ready to install or replace your parts at any moment. Our state-of-the-art software management team enables us to act at the right time and place.



From bearings and seals to seats, chargers and tires, we offer a wide range of parts as well as parts for construction machinery

SERVICE

Thanks to our 25 years of experience, 4000 sold machines and officially authorized and trained servicers according to TOYOTA standards, we provide a professional service comprised of highly professional personnel, specialized vehicles and software.

Regular servicing of forklifts and everyday inspections help reduce current maintenance costs for the forklift owner. Service according to the manufacturer's specifications prevents damage to the main components and improves the performance of your forklift. The regular service ensures that all forklifts are operational in the long run.

Types of services offered:



**SERVICE ON
DEMAND**



**SECURITY
CHECKS**



**PREVENTIVE
MAINTENANCE**



**FULL
SERVICE**



**SPECIAL
PACKAGES**

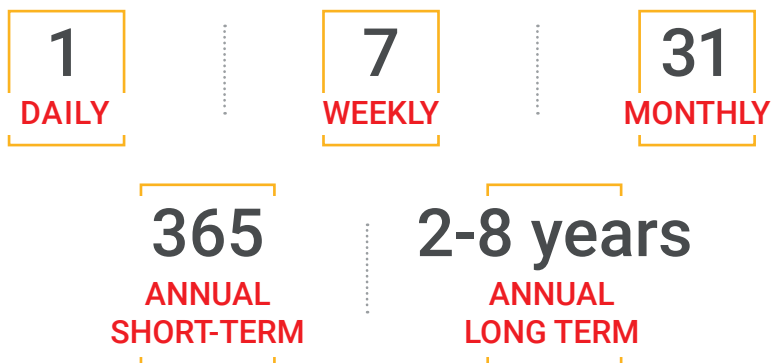


Our service vehicles ready for everyday calls and maintenance

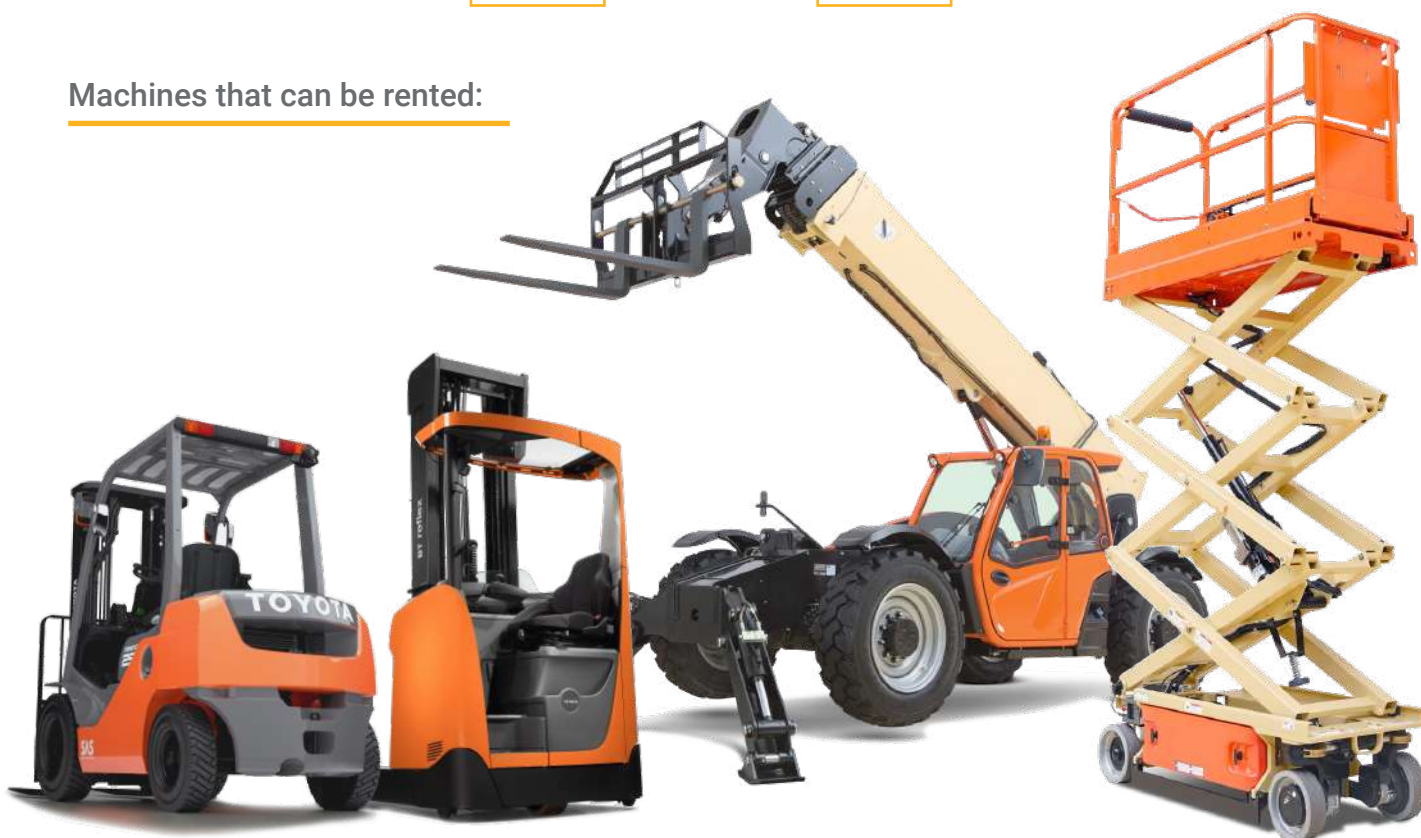
RENTAL

Renting can serve as a great way to carry out your material handling activities or various maintenance tasks on high places with a forklift or a moving platform for a certain period of time or seasonal work. Whether in short or long term, our quality and reputation make our forklifts ideal for rent.

We are offering various machines for rent, giving your business a possibility to finish different jobs in the following time periods:



Machines that can be rented:



COUNTERWEIGHT AND WAREHOUSE FORKLIFTS

Forklift trucks for any application when handling pallets and specialized materials. For outdoor and indoor use.

TELESCOPIC FORKLIFTS

Suitable for construction work, storing materials in higher places, rugged terrain and special needs.

MOBILE PLATFORMS

Ideal for working in high places with lifting heights of up to 27 meters, uneven terrain, excellent speed when raising and lowering.

RACKING SOLUTIONS

Many years of experience with material handling machines had gained us enough knowledge of the whole process and the needs in the field of pallet storage. One of the key starting points for product storage is of course the warehouse space.

The customer experience has led to the opportunity to go one step further and expand our services beyond mobile machines.

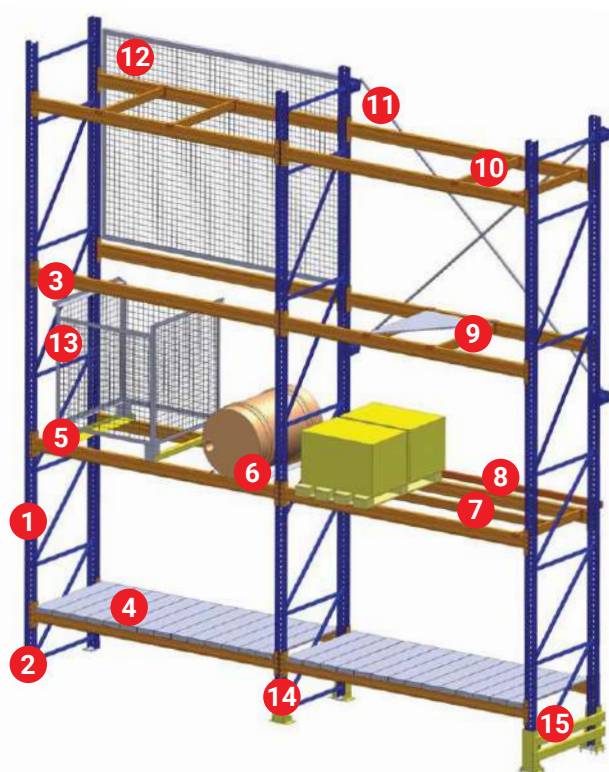
The new service we offer is the installation of racking systems that will allow us to give you a complete solution for your work process and product storage.



CONVENTIONAL PALLET RACKING SYSTEM

The only type of rack that can offer 100% access to any pallet in your system at any time. Conventional racking is generally designed with the possibility of stacking pallets unilaterally or bilaterally, with a path wide enough for a forklift to pass. Because it takes up maximum

stack space when installed, it is used to determine stack capacity before being compared to any other system. The working aisle measurement between each rack and the rack height depends upon the characteristics of the forklift trucks, pallet size and height of the warehouse itself.



1. Main beam
2. Foot Plate
3. Beam
4. Steel Decks
5. Box Support
6. Barrel Support Bar
7. H Type Support Bar
8. Pallet Stopper
9. Plywood Support Bar
10. Pallet Support Bar
11. Back Bracing
12. Wire Mesh Deck
13. Box
14. U Type Upright Protector
15. O Type Protector
B Type Protector



Description of the basic and additional parts that make up this system

DRIVE IN RACK SYSTEM

Seasonal product storage (canned, fig) food, chemical, logistics, raw material storage, cold air storage system is applied. Engine In rack system main components are uprights, beams and pallet rails which create an internal corridor. The trucks enter the aforementioned internal corridor with

the raised pallet to the level to which it is placed. The vehicle must not be wider than the pallet. A guide rail is recommended to speed up the movement and operation of the forklifts and at the same time provide ease of use.



NARROW AISLE RACKING SYSTEM

The equipment used to load and unload pallets from this system does not turn in the aisle but just moves along it on a predetermined track and the forks move sideways into the rack to access the pallet. These systems typically operate in conjunction with wireguided or rail-guided reach-truck forklift.

A wire-guided system consists of a wire embedded in the concrete floor that provides tracking for the reachtruck. The RFID tags are also installed at separate picking segments to achieve maximum picking efficiency.



PALLET FLOW RACKING SYSTEM

These systems are also called gravity flow or dynamic flow systems. The pallet flow system often has complex motion and braking systems to control the speed of the moving pallet. Pallet Flow Racking System consists of two elements: a static rack structure and dynamic flow rails. The flow rails are a track/

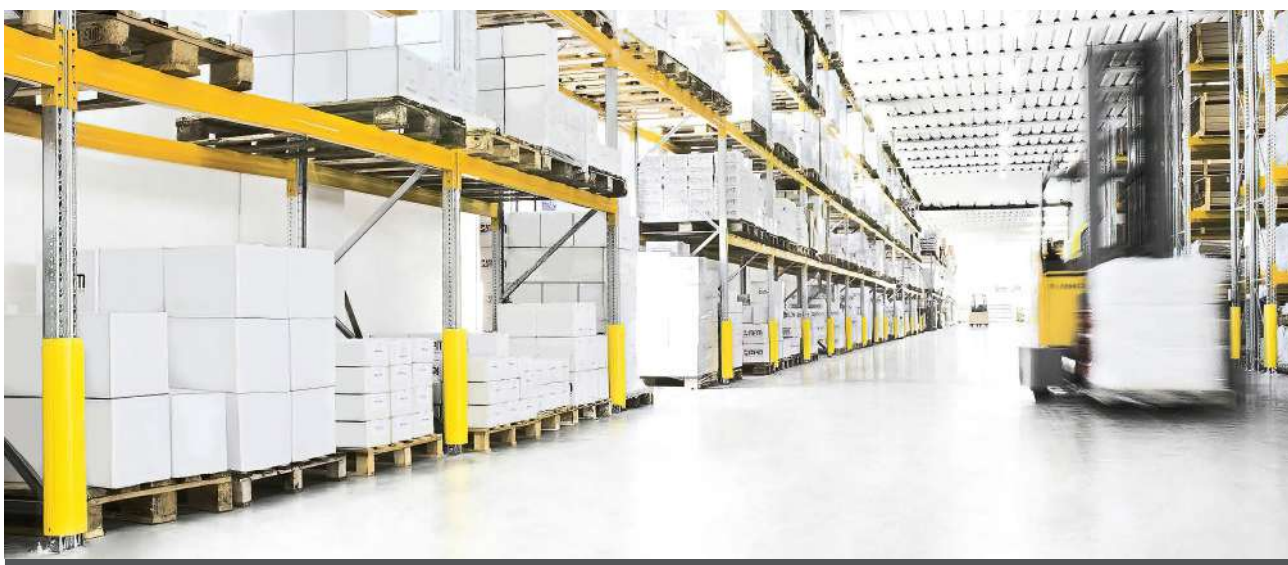
roller system set at a decline along the length of the rack. Flow rails allow loads to move by gravity from the loading end to the unloading end. Each flow lane includes speed controllers (brakes) to gently control the speed of movement within the flow lanes.



WAREHOUSE PROTECTION

The growing demand for complete warehouse solutions has triggered initiatives to expand our product range. The latest solutions in our offer is a security plan for warehouses and production plants. Increased workplace safety is key in daily operations and increased operational efficiency.

We look beyond a specific security product. Our offer offers safety products that cover a wide range of possible risk situations in the workplace: fall protection, impact protection, anti-slip protection, prevention or reduction of damage to warehouse and production infrastructure, such as racks, walls, pillars, machines, ramps and equipment.



TYPES OF PROTECTION

Depending on the need and the space provided, we can offer you various solutions and types of security elements.

You can protect racking chair-booms, supporting pillars of buildings, walkways, loading ramps, roller doors and much more.

It is also important to analyze the space, the possibilities in the building itself, as well as the operational work that takes place every day for the installation to function flawlessly.

On the right page you can preview the types of protection we can offer for every kind of warehouses and production facilities.

01 Racks protection



02 Protective pillars



03 Protective rails



04 Protection of pedestrians



05 Wheels protection



01 RACKS PROTECTION

A complete range of techno polymer profiles for the protection of warehouse racks.



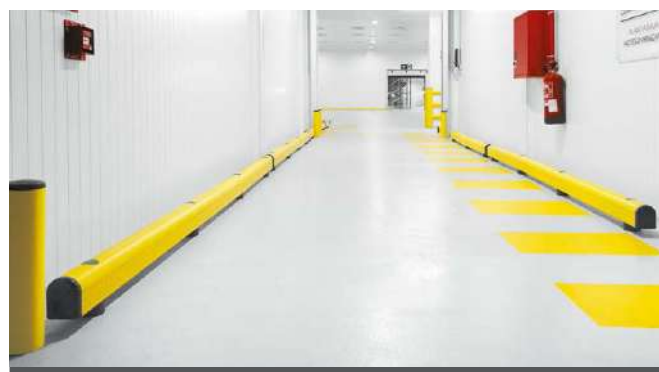
02 PROTECTIVE PILLARS

Designed to protect the pris-tap next to gates or large doors from heavy traffic or simply to mark restricted areas for pedestrians.



03 PROTECTIVE RAILS

Protection of walls from unwanted impacts from forklifts and cleaning machines.



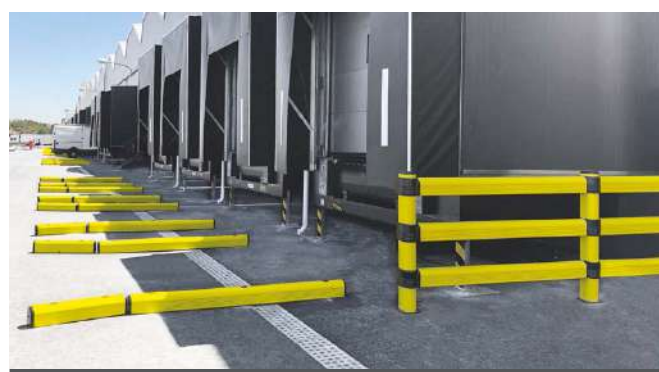
04 PEDESTRIAN PROTECTION

Guardrails for pedestrian zones resistant to impacts of trolleys and manual forklifts with different types of load.



05 WHEELS PROTECTION

Solutions designed for the safety of loading and unloading zones in warehouses and parking lots.



MANAGEMENT TEAM

Understanding customer needs is crucial in our working practice



Filip Damjanovski

Assistant General Manager

+389 75 362 923
filip.d@termalift.com.mk



Bojan Bojkovic

Spare Parts Manager

+389 75 375 250
bojan.b@termalift.com.mk



Dragan Damjanovski

General Manager
Owner

+389 75 211 044
dragan@termalift.com.mk



Manuela Bojkovic

Financial Manager

+389 75 416 988
manuela@termalift.com.mk



Violeta Donevska

Hand Pallet Trucks Sales
Manager

+389 75 386 363
paletari@termalift.com.mk



Frosina Damjanovska

Assistant Financial Manager

+389 75 362 922
frosina.d@termalift.com.mk



Dejan Dimitrievski

Mobile Service Manager

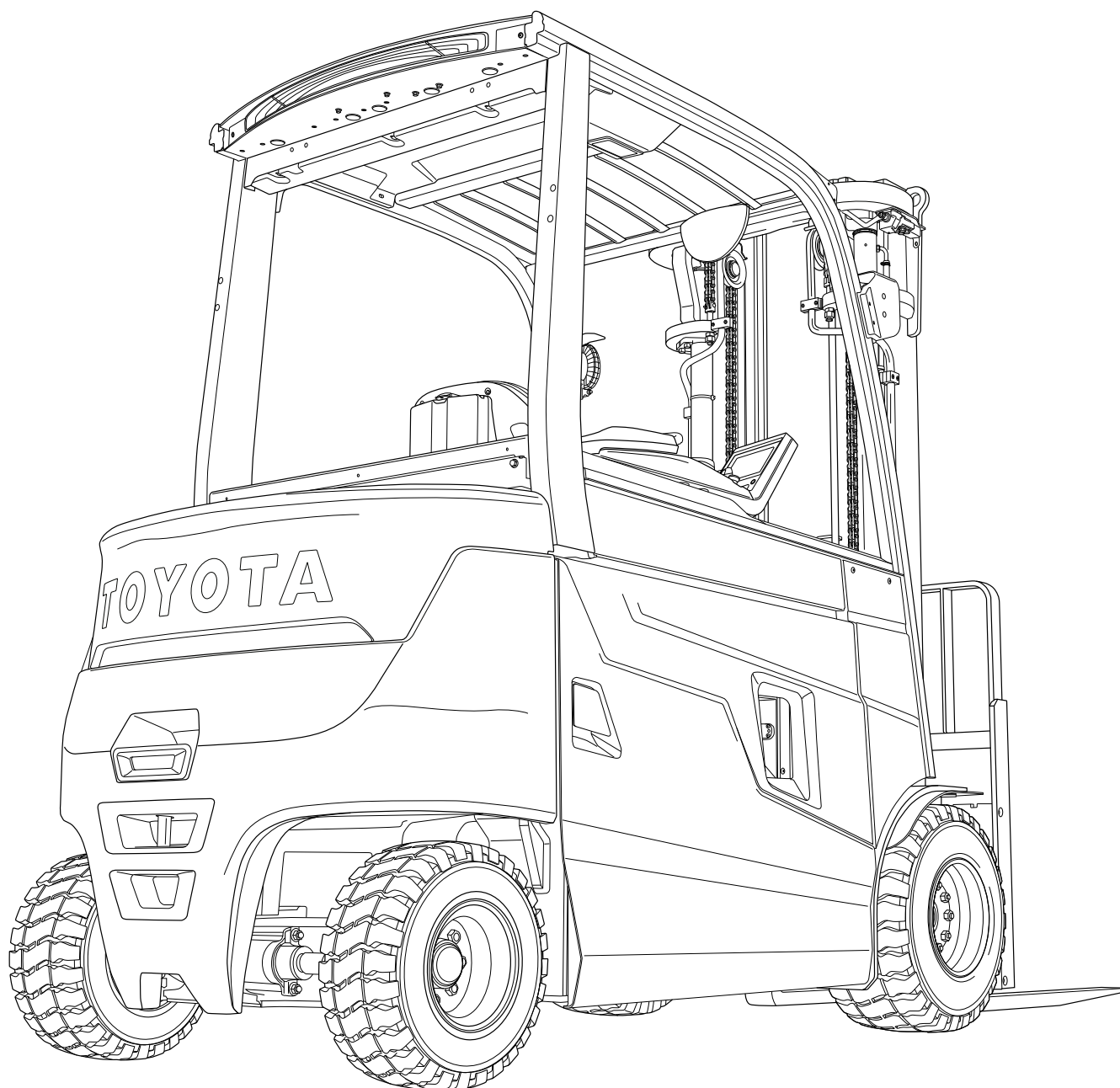
+389 75 362 911
dejan.d@termalift.com.mk

LOCATION

TERMALIFT

Street 100 bb. Industrial zone, Naselba Karposh
1300 Kumanovo, R. Macedonia





TERMALIFT DD DOO
Street 100 bb. Industrial zone
Naselba Karposh - 1300 Kumanovo, Macedonia

 **+389 31 443 200**
info@termalift.com.mk



 **+389 76 294 600**
www.termalift.com.mk

TERMALIFT